

Maintenance

1. After use the dosing pump, clean the liquid medicine container then put in clean water, let the dosing pump continue to work for some time.
2. Accessories of the dosing pump which contacting liquid medicine need to be manually opened and cleaned regularly.
3. When the working environment temperature is very low , it is necessary to drain the water in the dosing pump and remove the dosing pump to indoors.

ONE YEAR WARRANTY.

We ensure that every set of dosing pump is tested with water flow prior to product's release .

Troubleshooting:

Problem	Check	Solution
Dosing pump dose not operate	Check that the intake and outlet valves are open	Open the valve
	Check that the water filter isn't clogged	Clean the filter
	Check that water is flowing in the line	Open main and outlet valve
	Check that springs are not broken Open pump lid & remove piston	Change the broken spring
	Check that cylinder is not scratched	Change cylinder
	Check that piston seals are not damaged	Change the piston
Dosing pump dose not draw	Dismantle the suction pump and check the suction seal for damage	Change the suction seal
Dosing pump makes scratching noises	Check if there is liquid in the additive container	Add liquid to the container
	Check if suction pipe is immersed and not folded	Straighten or change the pipe
	Check suction filter to see if it is blocked and if it is immersed in the additive tank	Clean and rinse suction filter, Fill liquid into tank to cover filter



Savewater dosing pump user manual



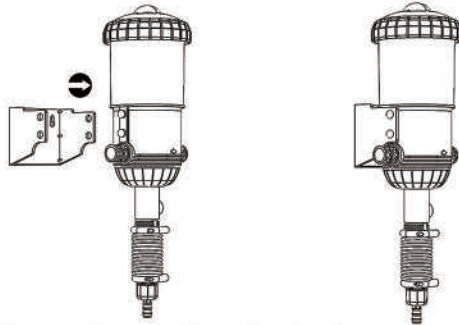
Working principle

Water powered working principle , no need electrical or other powers , connecting pressured water source as working condition .When pressurized water flows into the dosing pump , the piston device inside starts to work , extracting medicine into the product and mixed with water, then outflow from dosing pump into pipeline.

Model	Dosage Rate %	Dosage Rate	Flow Rate Range	Pressure Range	Connectors Diameter Thread	Working Temp
XS2502	0.3%-2%	1:333 - 1:50	7-2500 L/H 0.03-11 GPM	0.2 - 8 BAR 2.9 - 120 PSI	3/4" BSPT	4-40 ° C (39.2-104 ° F)
XS2504	0.4%-4%	1:250 - 1:25	7-2500 L/H 0.03-11 GPM	0.2 - 8 BAR 2.9 - 120 PSI	3/4" BSPT	4-40 ° C (39.2-104 ° F)
XS3510	1%-10%	1:100 - 1:10	50-3500 L/H 0.22 - 15.5GPM	0.2 - 8 BAR 2.9 - 120 PSI	3/4" BSPT	4-40 ° C (39.2-104 ° F)

Installation

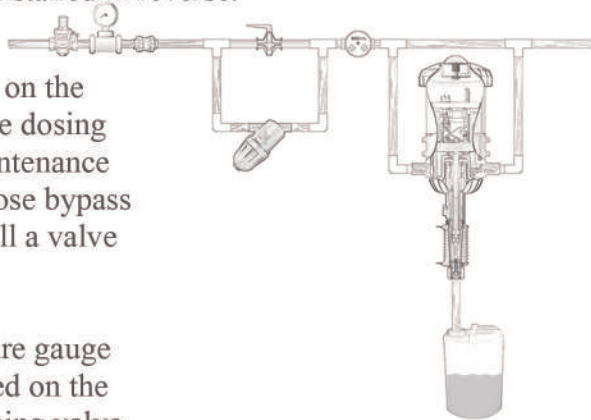
Straight (one pipe) installation and bypass installation, generally we recommend bypass installation (as pictures show).



1. Choose a suitable location for installing and operating the dosing pump, fix the bracket firmly with screws, and press the two fixing points of the dosing pump into the holes of the bracket.
2. Make sure that there is a water filter, which with a filtration accuracy of not less than 120 mesh installed in front of the dosing pump.
3. The dosing pump must be installed vertically, with head on the top and the tube for sucking the liquid at the bottom, tube can be put into the liquid container underneath. Note: tube for sucking the liquid also must be placed in the liquid container vertically, and the end of the tube should be guaranteed at the bottom of the container.
4. When installing the dosing pump on water pipe, make sure the water flow direction of the water pipe is the same as the direction of the arrow on the dosing pump, and cannot be installed in reverse.

5. Valves need to be installed on the water pipe for both ends of the dosing pump, for inspection and maintenance purpose. Note that if you choose bypass installation, also need to install a valve on the main water pipeline.

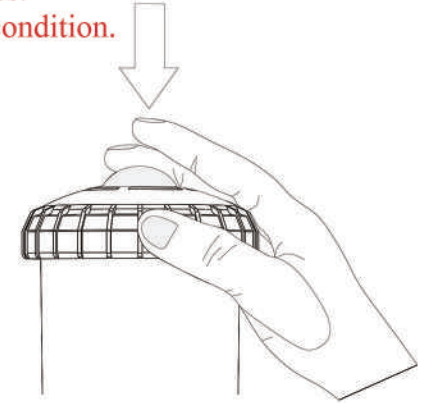
6. A water meter and a pressure gauge are also required to be installed on the water pipeline, pressure reducing valve is selectively installed according to the actual situation of pressure requirements.



Instructions

MUST use water-soluble drugs or additives.
The rattling sound while using is normal condition.

1. For the first time using dosing pump, need to manually press the exhaust valve on top to exhaust. Each time press and hold the exhaust valve for a few seconds and then release, repeat above steps several times till the water comes out under the exhaust valve.



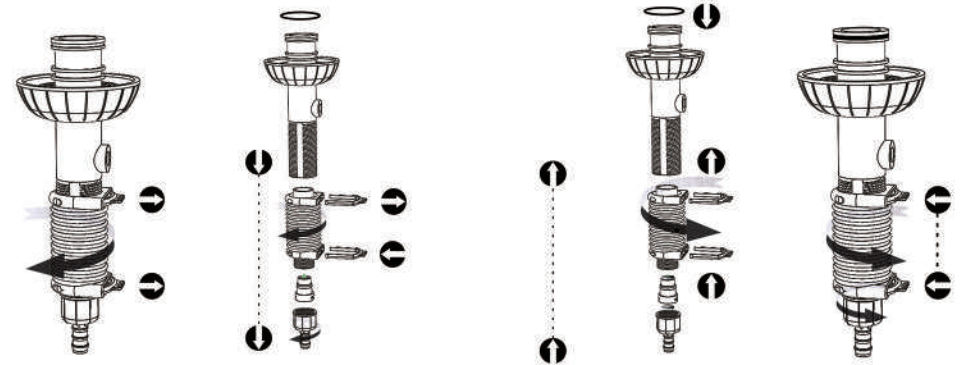
2. Dosage Rate adjustment

A: Remove the "U" lock on the red screw.

B: Rotate the red screw to the corresponding scale on the dosing pump according to the requirements for the use of the liquid medicine. This scale is the ratio of the liquid medicine/ water . The scale is increasing upward.

C: When rotating the red screw, clockwise decreases the rate and counterclockwise increases the rate .

D: Once confirm the correct scale ,insert the "U" lock back onto the red screw and fix.



3. Make sure the liquid medicine container is not empty when dosing pump under work.